

# WISeNET X PLUS

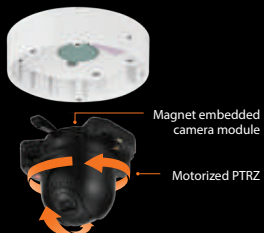
## 2MP/5MP NW Modular Camera

**Faster installation  
x Reduced costs**

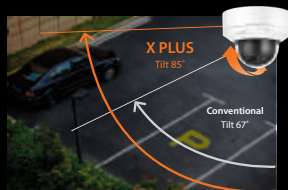
**Advanced performance  
x Multiplied values**



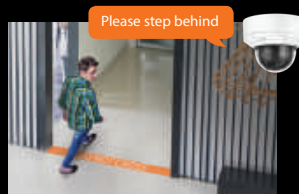
The X Plus cameras feature a modular design that makes installation and maintenance simpler than ever. With extended tilt range, motorized PTRZ and optional skin covers, you will soon discover why X Plus is one of the most versatile camera lines on the market.



Modular structure  
And motorized PTRZ



Extended tilt range for  
greater flexibility



Audio playback on event



Weather Cap Black & Ivory Skin Cover

Optional accessories

## Innovative Modular Design



### Mounting Plate

Can be installed on site without other camera parts



### Camera Case

Vandal Resistant Housing



### Camera Module

This magnetically mounted 2 or 5 megapixel camera module can be installed without extra tools or hardware



### Dome Cover

Polycarbonate dome cover



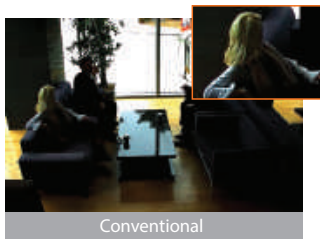
### Paintable Ivory Skin Cover Included

Can be painted to blend into your environment

# WISeNET Xseries

## Multi-frame WDR(150dB)

Conventional WDR captures images by taking 2 frames taken at different exposures, whereas Wisenet X series cameras utilize 4 frame capture at different exposure levels to create a combined image. With the development of cutting-edge WDR technology, Wisenet X series cameras address a limitation found in conventional WDR cameras while producing clear and vivid images.



Conventional

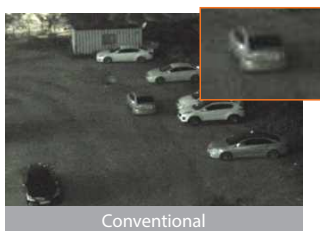


Wisenet X series

※ 150dB WDR only available in 2MP X series

## extraLUX provides clear and colored images, even in low-light environments

Wisenet X series achieves optimal performance in low-light conditions by producing crystal-clear and true-color images without IR LEDs, regardless of the environment or time of day. The extraLUX series (XNO-6085R, XND/XNV-6085(V)) feature outstanding F0.94 lens with the 1/2" CMOS sensor, capturing vivid color images even in low-light environments.



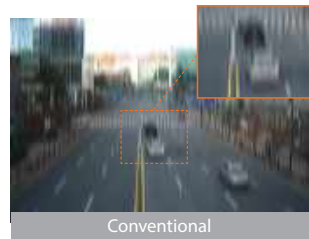
Conventional



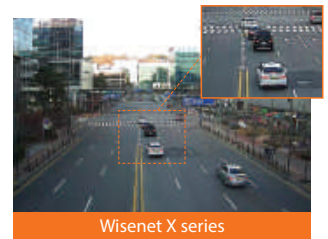
extraLUX(XNV-6085)

## Digital Image Stabilization(DIS) with built-in Gyro sensor

Advances in Wisenet image stabilization technology allows the reduction of motion blur caused by wind or vibration. A gyroscopic sensor plus DIS technology is specifically added to the Wisenet X series cameras for more accurate stabilization.



Conventional



Wisenet X series

## Improve bandwidth by up to 75% using WiseStream II

Using WiseStream II, Hanuwa Techwin's original video compression technology, the Wisenet X series reduces data by up to 99% compared to current H.264 technology, when combined with H.265 compression. System costs are also greatly reduced without comprising image quality.



WiseStream II OFF : 7160kbps  
WiseStream II ON : 74kbps



WiseStream II OFF : 7260kbps  
WiseStream II ON : 1817kbps

## Easy Installation with Modular Structure and Motorized PTRZ

When combined, the unique modular design of the Wisenet X series Plus camera and motorized PTRZ camera module make on-site installation simple and pain free.\*

Additionally, the product package has been reformulated to allow technicians quick access to the camera's network port for easy staging of product, saving time (and money) during installation and maintenance.

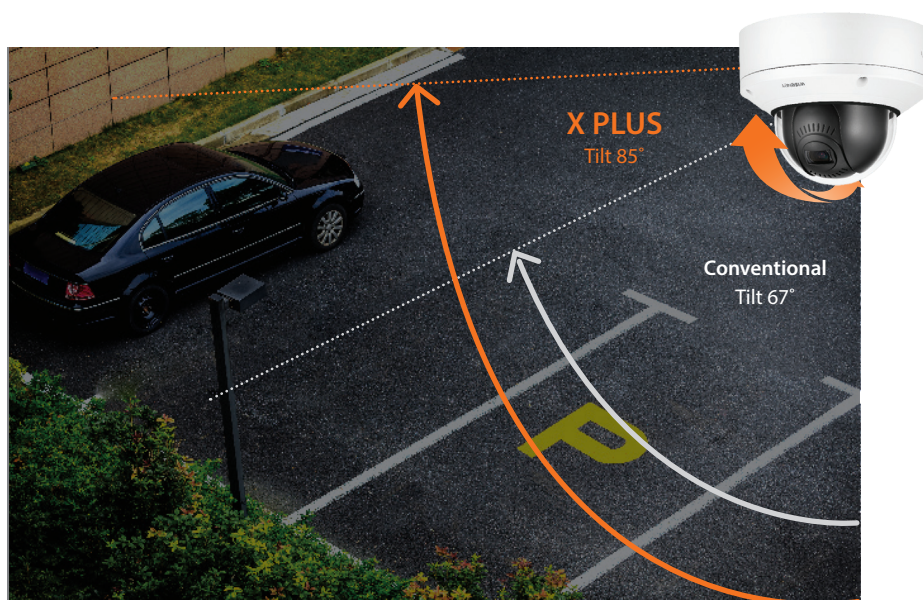
\*Varies by model



Installer friendly package allows access to a camera's network port while still in the box.

## Extended Tilt Range for Greater Flexibility

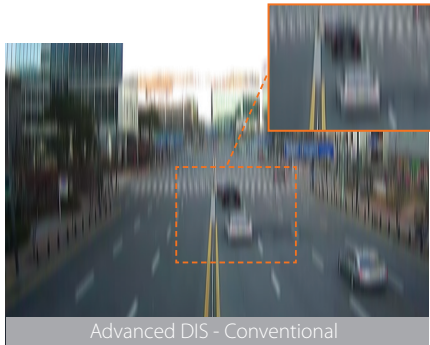
Extended tilt angle has been added for greater flexibility in placement and use cases of Wisenet X Plus cameras.





## Advanced DIS and Shock Detection with Built-in Gyro Sensors

Wisenet X Plus cameras have built-in gyro sensors to enable advanced DIS with reduced motion blur and shock detection which detects when the camera is hit.



Advanced DIS - Conventional



Advanced DIS - Wisenet X PLUS



Shock Detection

## High Reliability in Challenging Environments

One of the most important features of a security camera is reliability in challenging environments. Wisenet X PLUS cameras offer high reliability by providing resistance to weather and impact with IP67, IP66, IP6K9K, IK10+ ratings, and NEMA 4X rating.



IP67, IP66, IP6K9K



IK10+



-50°C ~ 60°C

## Audio Playback on Event

Wisenet X series Plus cameras allow system operators to communicate with the public by using audio playback as a response to user-defined events.



## Wisenet X series Plus Configurations

Category	Outdoor Vandal Dome			Indoor Vandal Dome			Flush Mount Dome		
Feature	Non-IR	IR	PTRZ	Non-IR	IR	PTRZ	Non-IR	IR	PTRZ
2MP Model	<b>XNV-6081</b>	<b>XNV-6081R</b>	<b>XNV-6081Z</b>	<b>XND-6081V</b>	<b>XND-6081RV</b>	<b>XND-6081VZ</b>	<b>XNV-6081F</b>	<b>XNV-6081RF</b>	<b>XNV-6081FZ</b>
5MP Model		<b>XNV-8081R</b>	<b>XNV-8081Z</b>		<b>XND-8081RV</b>	<b>XND-8081VZ</b>		<b>XNV-8081RF</b>	<b>XNV-8081FZ</b>
	<ul style="list-style-type: none"><li>• IP67/IP66/IP6K9K</li><li>• IK10+</li><li>• NEMA 4X</li><li>• -58°F ~ +140°F</li></ul>			<ul style="list-style-type: none"><li>• IP52/IK10</li><li>• -13°F ~ +140°F</li></ul>			<ul style="list-style-type: none"><li>• IP52/Plenum Rated (UL2820)</li><li>• -13°F ~ +140°F</li></ul>		

## Optional Accessories for Various Applications

Included with each camera is a paintable ivory skin cover along with a weather cap for all outdoor models. Other optional accessories include black colored skin covers, an AC24V power module, and a plethora of mounting options to suit your environment.



Weather cap



Ivory & Black skin cover

Weather cap(XNV only) and ivory skin cover(XNV and XND) are included in product package. The weather cap can not be applied with the skin cover on.



**SBC-180B**

Skin cover

Compatible with XNV-6081Z/8081Z



**SBC-160B**

Skin cover

Compatible with XND-6081Z/8081Z



**SPC-100AC**

AC24V power module

Compatible with XNV-6081Z/8081Z



**SBP-187HMMW / 187HM**

Hanging mount

Compatible with XNV-6081Z/8081Z



**SBP-167HMMW / 167HM**

Hanging mount

Compatible with XND-6081Z/8081Z



**SBP-300WMMW1 / WM1**

Wall mount

Compatible with SBP-180HMMW/160HMMW



**SBP-300KMW / 300KM**

Corner mount

Compatible with SBP-300WMMW1



**SBP-300PMW / 300PM**

Pole mount

Compatible with SBP-300WMMW1



**SBP-300CMW / 300CM**

Celling mount

Compatible with SBP-180HMMW/160HMMW



**Wisenet X PLUS  
XND-6081VZ**



**Wisenet X PLUS  
XND-6081FZ**



**Wisenet X PLUS  
XNV-6081Z**

Type	Indoor vandal dome		Indoor flush mount	Outdoor vandal dome
Imaging Device	1/2.8" 2M CMOS			
Video Compression Format	H.265, H.264, MJPEG			
Resolution / Max. Frame Rate	2M/60fps			
Streaming Capacity	Multiple (Up to 10 Profiles)			
Max. User Access	20 (Unicast)			
Min. Illumination	Color : 0.15Lux B/W : 0.0015Lux			
Video Output	CVBS 1.0Vpp, Micro USB type B			
Lens	2.8~12mm (4.3x) motorized V/F (F1.4)			
Angular Field of View	H: 119.5°(Wide) ~ 27.9°(Tele) / V: 62.8°(Wide) ~ 15.7°(Tele)/ D: 142.1°(Wide) ~ 32.0°(Tele)			
Focus Control	Simple focus (motorized V/F) / Manual			
Pan / Tilt / Rotate	±175° / 0~85° / ±175°			
Day & Night	True (ICR)			
Backlight Compensation	WDR (150dB)			
Digital Noise Reduction	SSNRV (2D+3D Noise filter)			
Digital Image Stabilization	Support (Built in Gyro sensor)			
Video & Audio Analytics	Tampering, Loitering, Directional detection, Fog detection,Virtual line, Enter/Exit, (Dis)Appear, Audio detection,Face detection, Motion detection, Sound classification, Shock detection, Heatmap, People counting, Queue management, Audio Playback on event			
Protocol	ONVIF profile S/G, SUNAPI			
	1/1			
Audio	Bi-Directional			
Edge Storage	SD/SDHC/SDXC, NAS, Local PC			
Environment Protection	IP52, IK10	IP52, Plenum rated(UL2820)		IP67, IP66, IP6K9K, NEMA 4X, IK10+
Operating Temperature	-25°C ~ +60°C (-13°F ~ +140°F)			-50°C ~ +60°C (-58°F ~ +140°F) *Start up above -35°C (-31°F)
Power	Max. 8.5W (12V DC) Max.10W (PoE)			Max. 11W (24V AC) Max. 9.5W (12V DC) Max. 11W (PoE)
Dimensions (WxHxD) / Weight	Ø160 x 125mm (6.30" x 4.92") 1.45Kg (3.2 lb)	Ø205 x 155mm (8.07" x 6.10") 1.85Kg (4.08 lb)		Ø180 x 125mm (7.09" x 4.92") 1.75kg (3.86 lb)
Additional Features	Motorized Pan / Tilt / Rotate, Modular design			

※ Design and specifications are subject to change without notice.



## Accessory Configuration



### White Acc



### Ivory Acc





## 2MP/5MP NW Modular Camera



Wisenet X series Plus cameras combine the power of Hanwha's Wisenet 5 chipset with an innovative modular design that lowers overall cost of installation, configuration, and maintenance while increasing the performance, feature-set, and survivability of our X series product line.